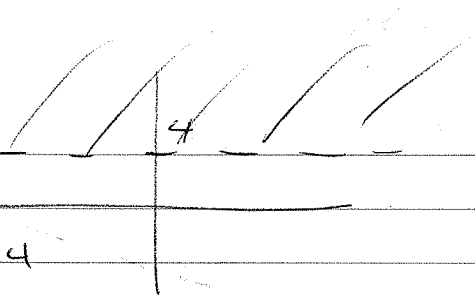


Sec 11.2

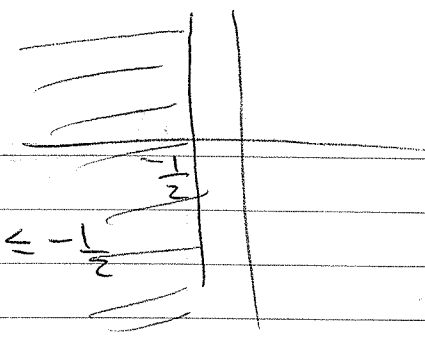
a)

$$y > 4$$



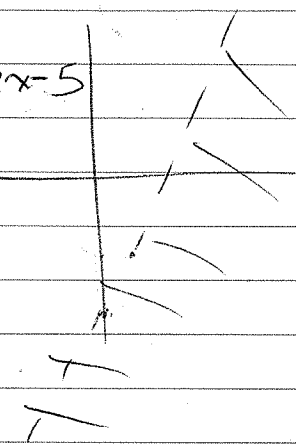
b)

$$x \leq -\frac{1}{2}$$



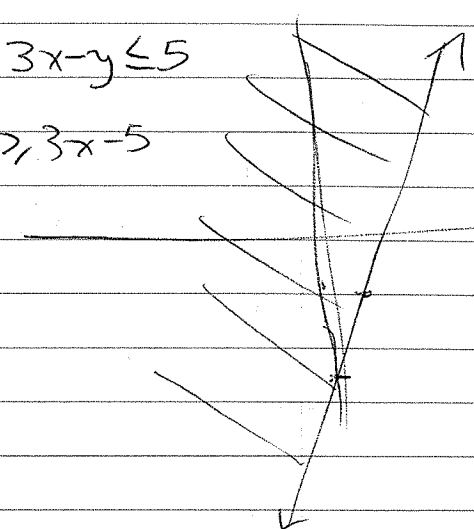
c)

$$y < 2x - 5$$



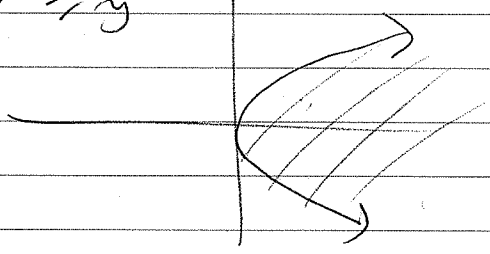
$$d) \quad 3x - y \leq 5$$

$$y > 3x - 5$$

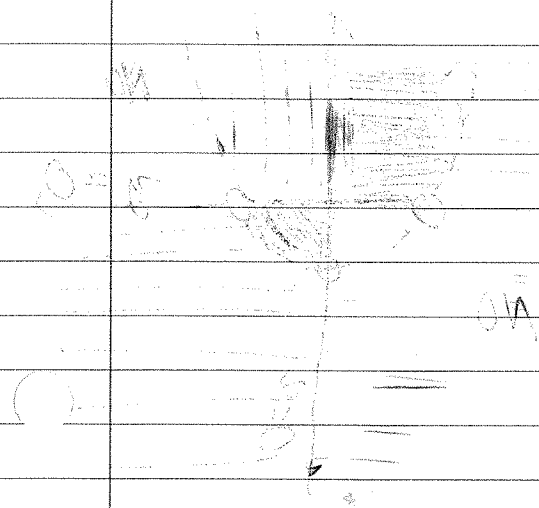
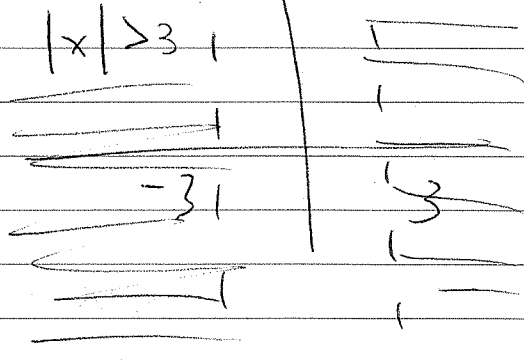


e)

$$x > y^2$$

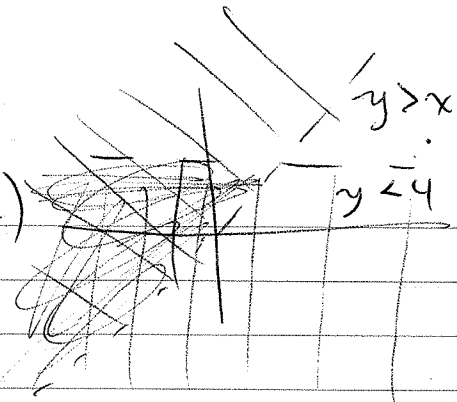


$$g) \quad |x| > 3$$

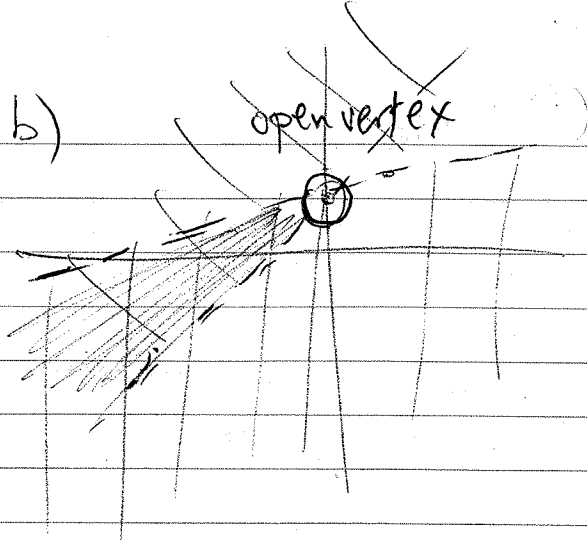


#2

a)

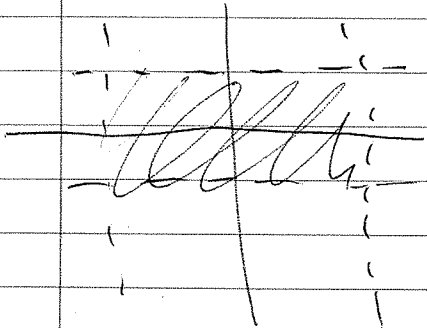


b)



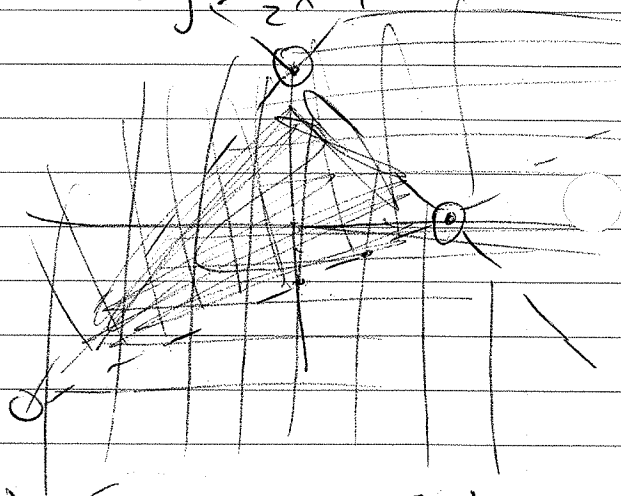
c)

$$\begin{cases} |y| < 1 \\ |x| \leq 2 \end{cases}$$



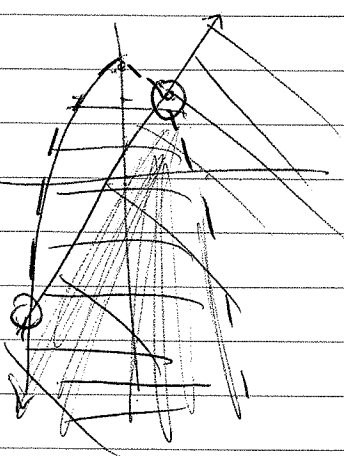
d)

$$\begin{cases} y < x + 3 \\ -2y < 3x - 6 \\ y > \frac{1}{2}x - 1 \end{cases}$$



e)

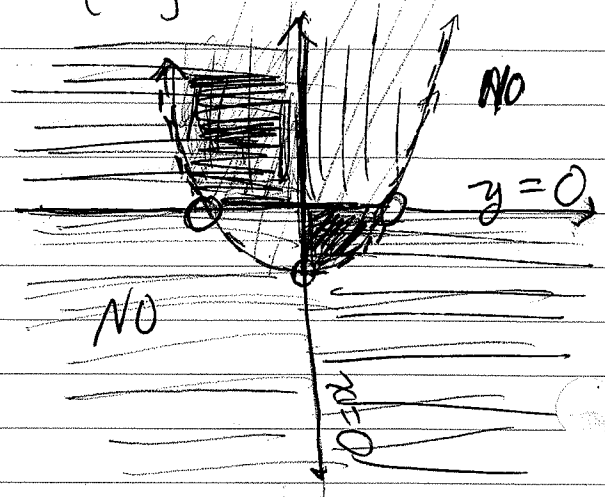
$$\begin{cases} y \leq x^2 + 4 \\ y \leq 2x + 1 \end{cases}$$



f)

$$\begin{cases} y > x^2 - 1 \\ xy \leq 0 \end{cases}$$

Think $xy = 0$



p. 364 con'd

#5b)
$$\begin{cases} 3x - 2y = -19 \\ x + 4y = -4 \end{cases} \rightarrow \begin{array}{r} 3x - 2y = -19 \\ -3x + 12y = 12 \end{array}$$

$$\boxed{(-6, \frac{1}{2})}$$

$$\begin{aligned} -14y &= -7 \\ y &= \frac{1}{2}, x = -6 \\ x &= -6 \end{aligned}$$

c)
$$\begin{cases} 3x - 2y = 12 \\ 5x + 4y = 2y \end{cases} \rightarrow \begin{array}{r} 15x - 10y = 60 \\ -15x - 12y = -6y \end{array}$$

$$\boxed{(-8, -18)}$$

$$\begin{aligned} &\downarrow \\ -10y &= 60 \\ + 6y &= +12 \\ -4y &= 72 \\ y &= -18, x = -8 \end{aligned}$$

d)
$$\begin{cases} 3x + 2y = -5 \\ 4x + 3y = -1 \end{cases} \rightarrow \begin{array}{r} 12x + 8y = -20 \\ -12x - 9y = 3 \end{array}$$

$$\boxed{(-13, 17)}$$

$$\begin{aligned} -y &= -17 \\ y &= 17, x = -13 \end{aligned}$$

#6 a)
$$\begin{cases} -8x + y = -2 \\ 4x - 3y = 1 \end{cases} \rightarrow \begin{array}{l} y = 8x - 2 \\ 4x = 3(8x - 2) + 1 \end{array}$$

$$\left(\frac{1}{4}, 0\right)$$

$$\begin{aligned} 4x - 24x &= -6 + 1 \\ -20x &= -5 \\ x &= \frac{1}{4}, y = 0 \end{aligned}$$

$$x = \frac{1}{4}, y = 0$$

#6b

$$\begin{cases} 3y = 2 - x \\ 2x + 6y = -3 \end{cases}$$

